



BISAZZA

MARMOSAICO

BISAZZA

MARMOSAICO



Bisazza presenta Marmosaico, una collezione di decori in mosaico di marmo disegnata da Carlo Dal Bianco. La collezione rivela una ricerca indirizzata verso la riscoperta della tradizione dei pavimenti decorati milanesi, rivisitando - con nuovi linguaggi - le forme del passato.

È una rilettura che trae spunto dai pavimenti di palazzi, residenze, alberghi e uffici della prima metà del Novecento milanese disegnati da Giovanni Muzio, Emilio Lancia, Piero Portaluppi, Gio Ponti, in un trentennio prolifico che ancora oggi ci ispira.

La collezione si compone di dieci decori con una scelta di marmi che conferma le tonalità cromatiche e gli abbinamenti della tradizione: Bianco Thassos, Grigio Bardiglio, Verde Guatemala, Nero Assoluto, Crema Botticino, Marrone Ebano, Giallo e Rosso Verona.



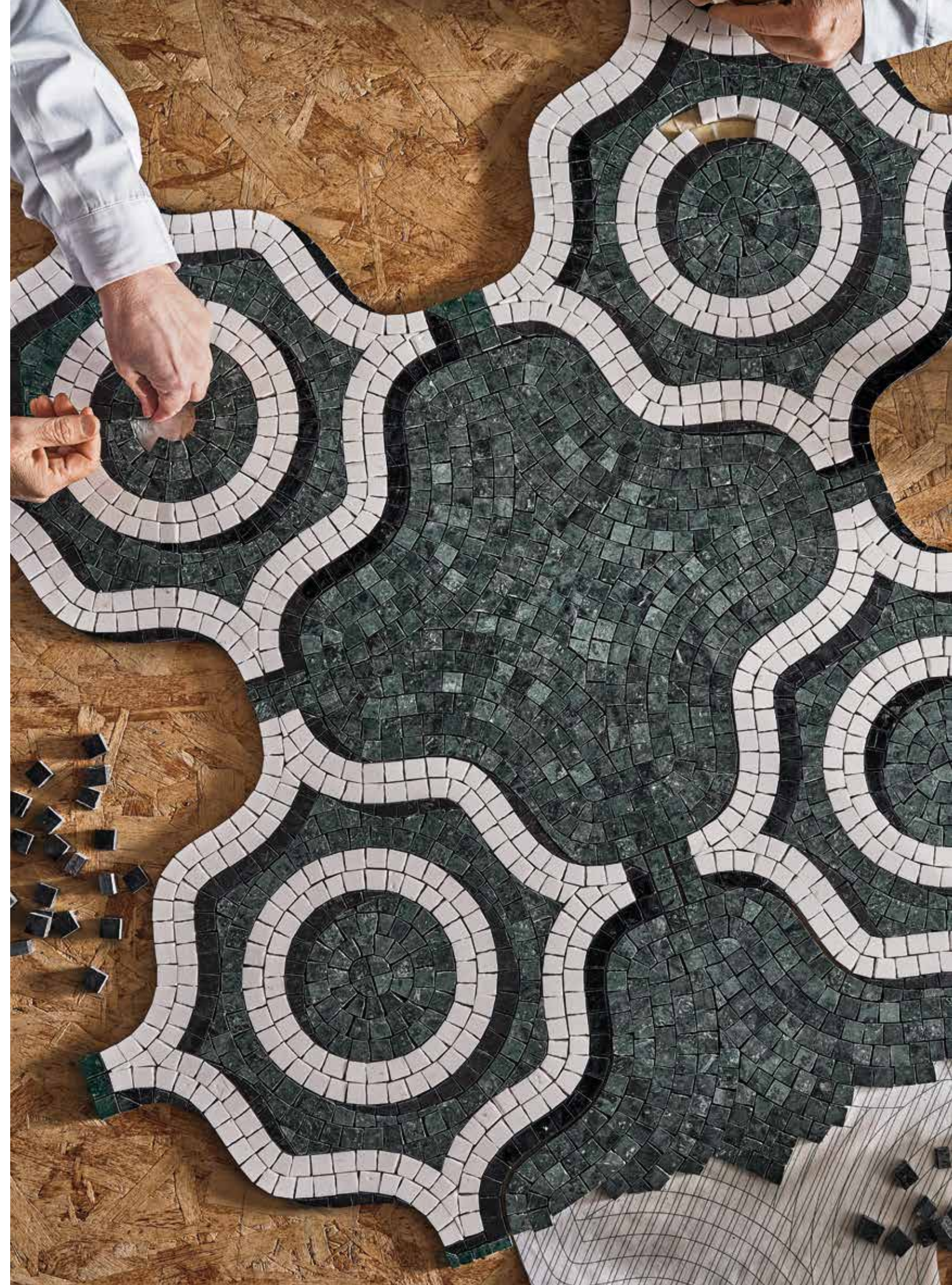
Bisazza introduces Marmosaico, a collection of decorative marble mosaics designed by Carlo Dal Bianco. The collection is based on the rediscovery of traditional Milanese decorated floors reinterpreting, with a fresh approach, the shapes of the past.

The work is inspired by the floors in historic buildings, homes, hotels and offices from the early 1900s in Milan. Designed by Giovanni Muzio, Emilio Lancia, Piero Portaluppi and Gio Ponti over three prolific decades, their brilliance still shines today.

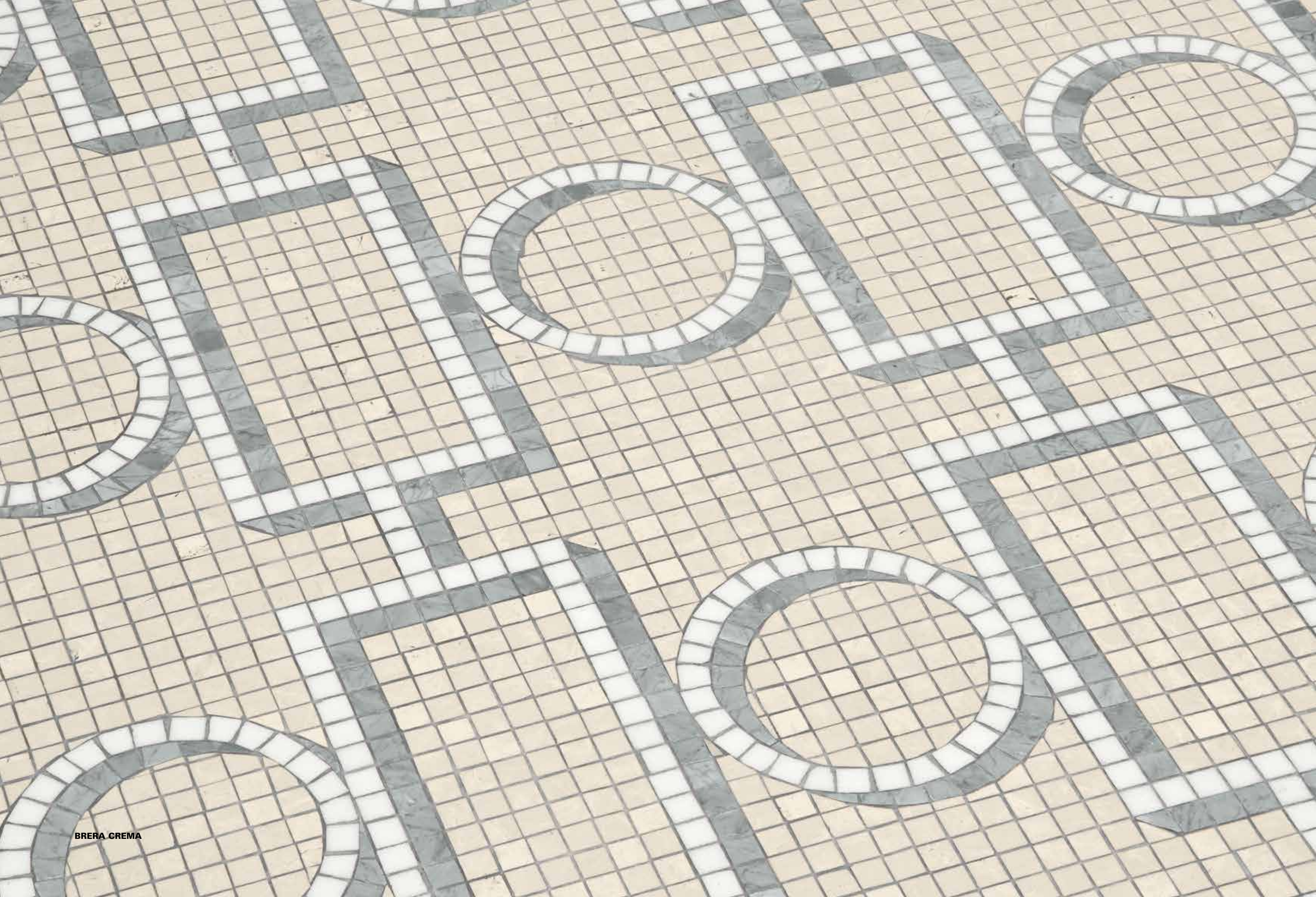
The collection includes ten decorative mosaic patterns in a selection of marble types that echo timeless color choices and juxtapositions: Bianco Thassos, Grigio Bardiglio, Verde Guatemala, Nero Assoluto, Crema Botticino, Marrone Ebano, Giallo and Rosso Verona.







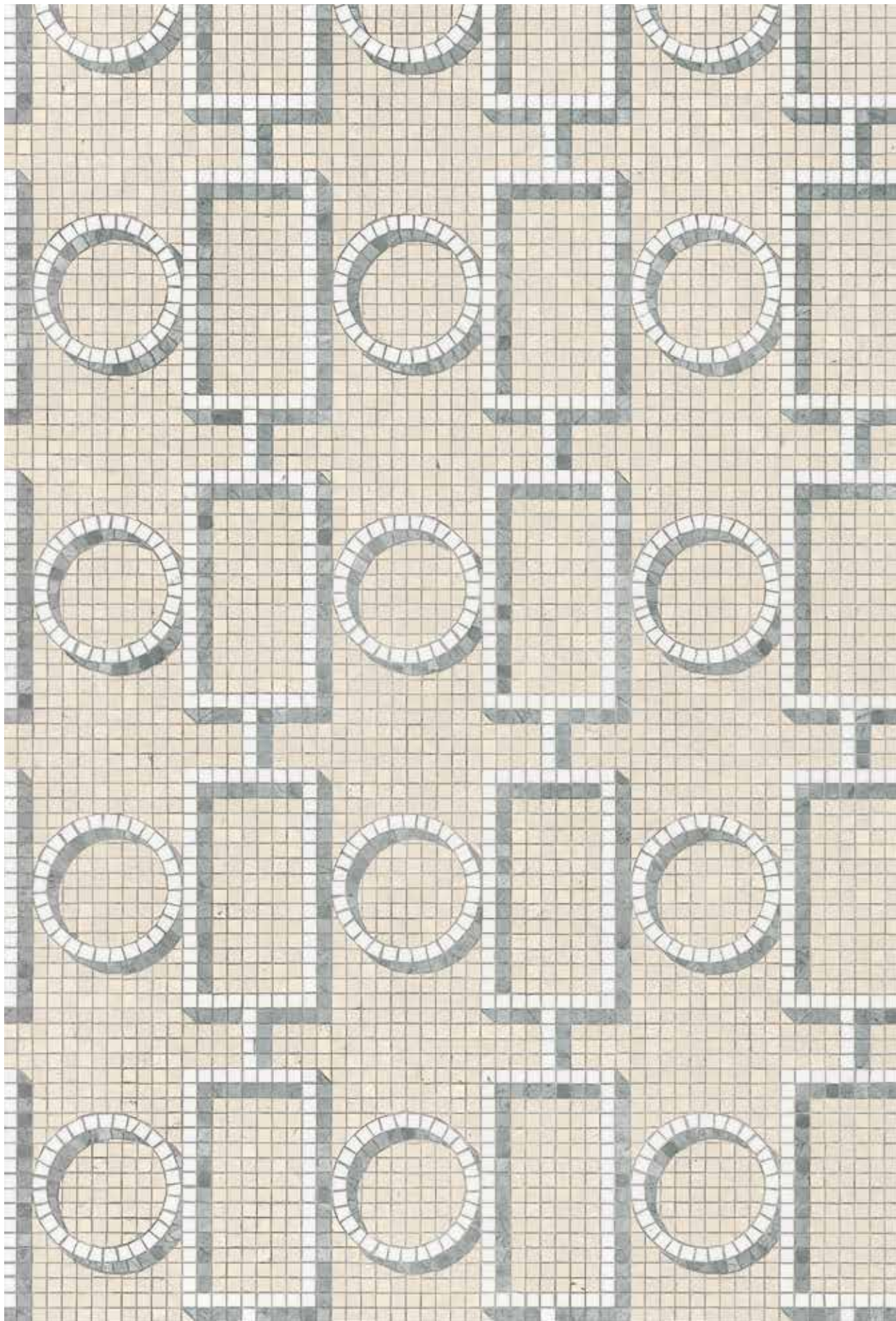
I DECORI
DECORATIONS



BRERA CREMA

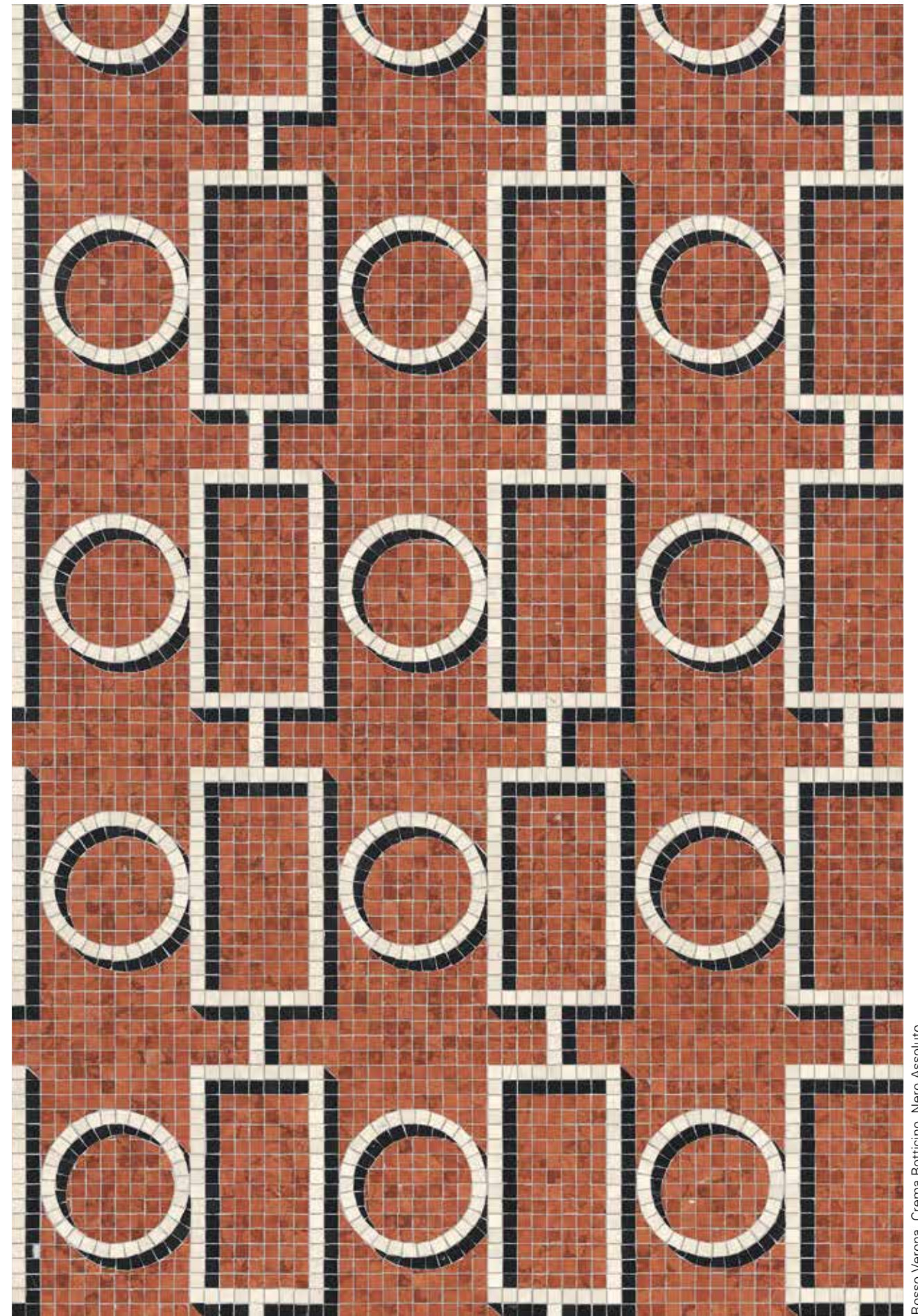


BRERA ROSSO



Crema Botticino, Bianco Thassos, Grigio Bardiglio

BRERA CREMA



Rosso Verona, Crema Botticino, Nero Assoluto

BRERA ROSSO





BELGIOIOSO NERO





Nero Assoluto, Crema Botticino

BELGIOIOSO NERO



Crema Botticino, Verde Guatemala

BELGIOIOSO CREMA

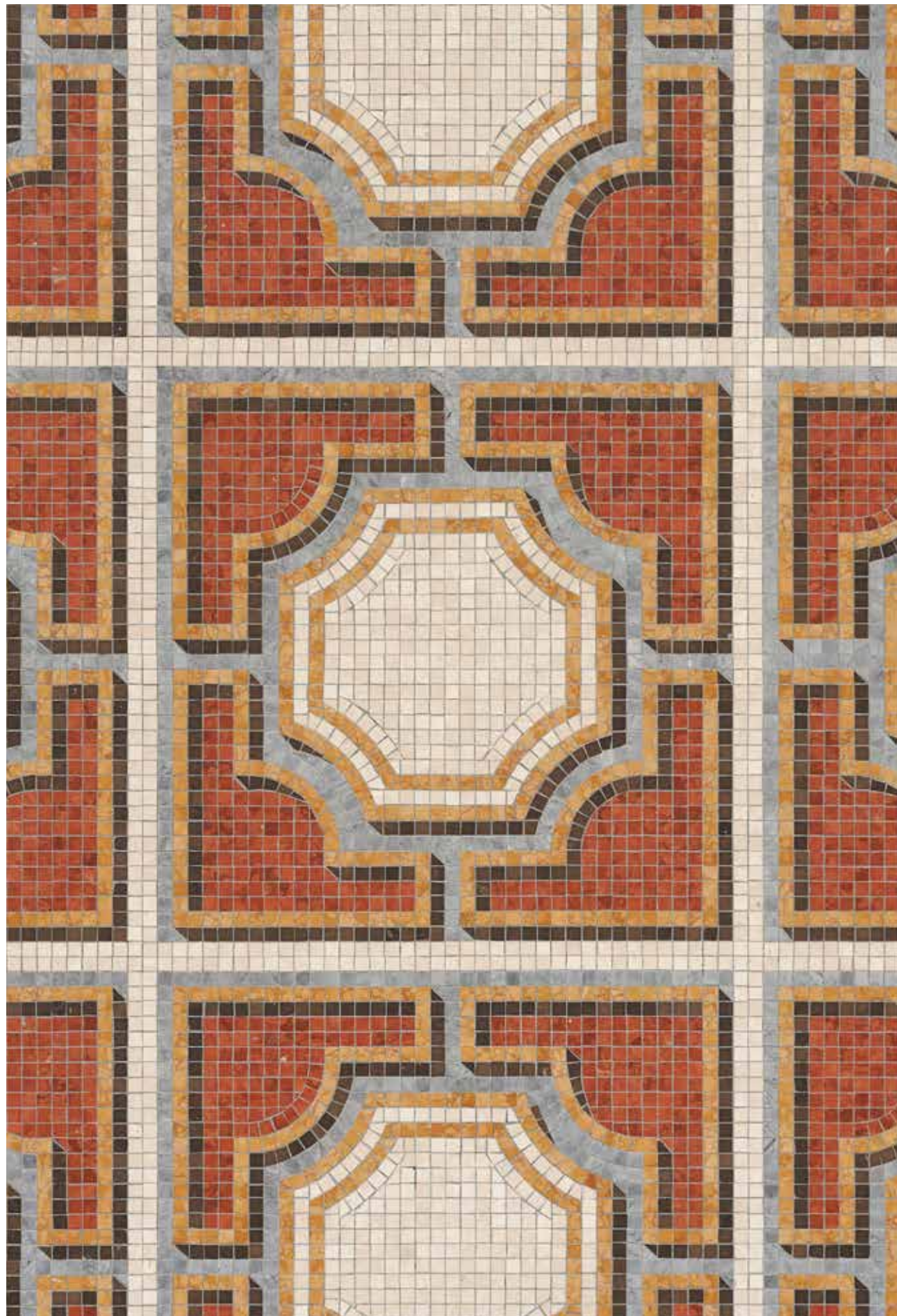




SOLFERINO ROSSO

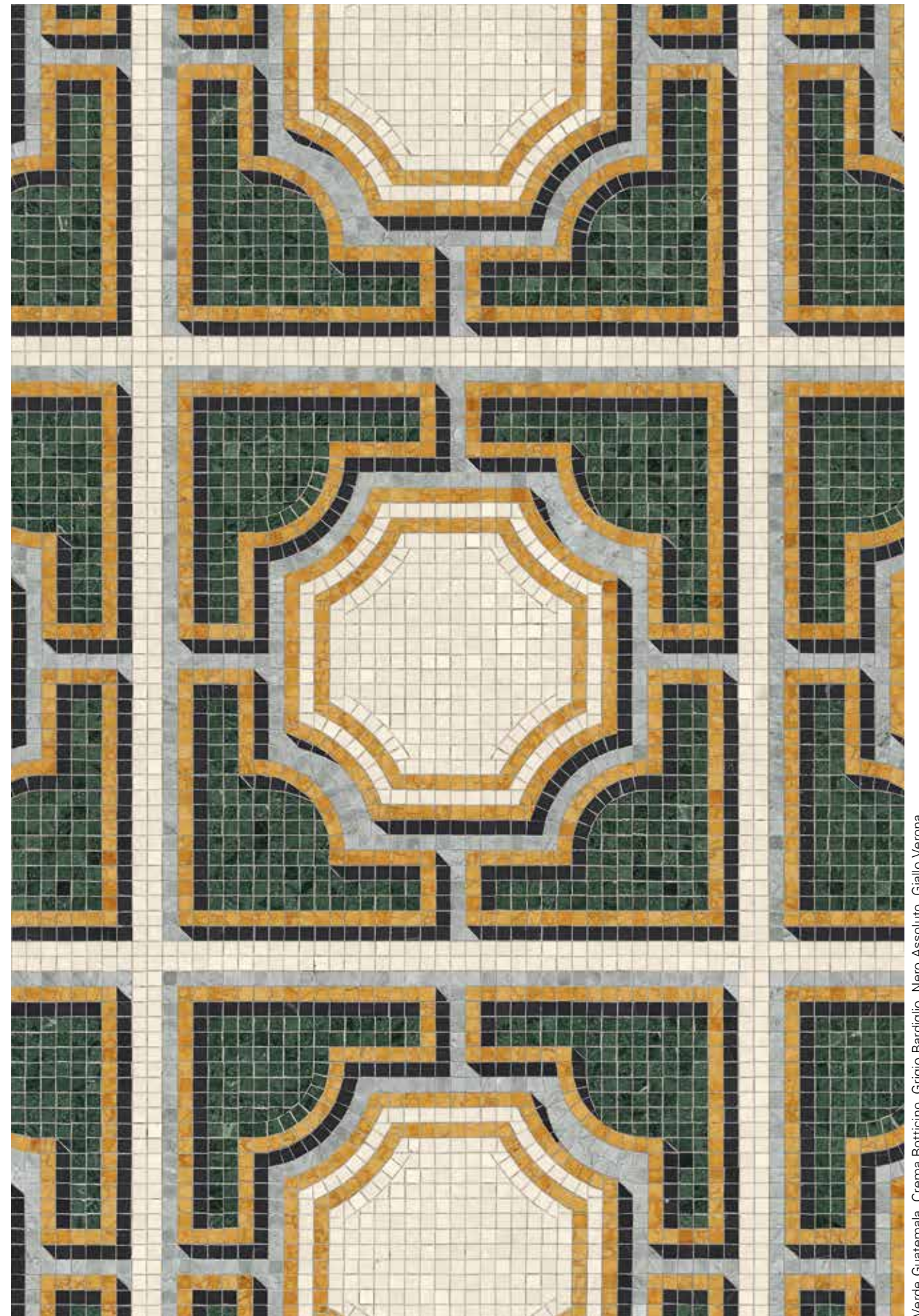


SOLFERINO VERDE



Rosso Verona, Crema Botticino, Grigio Bardiglio, Marrone Ebano, Giallo Verona

SOLFERINO ROSSO



Verde Guatemala, Crema Botticino, Grigio Bardiglio, Nero Assoluto, Giallo Verona

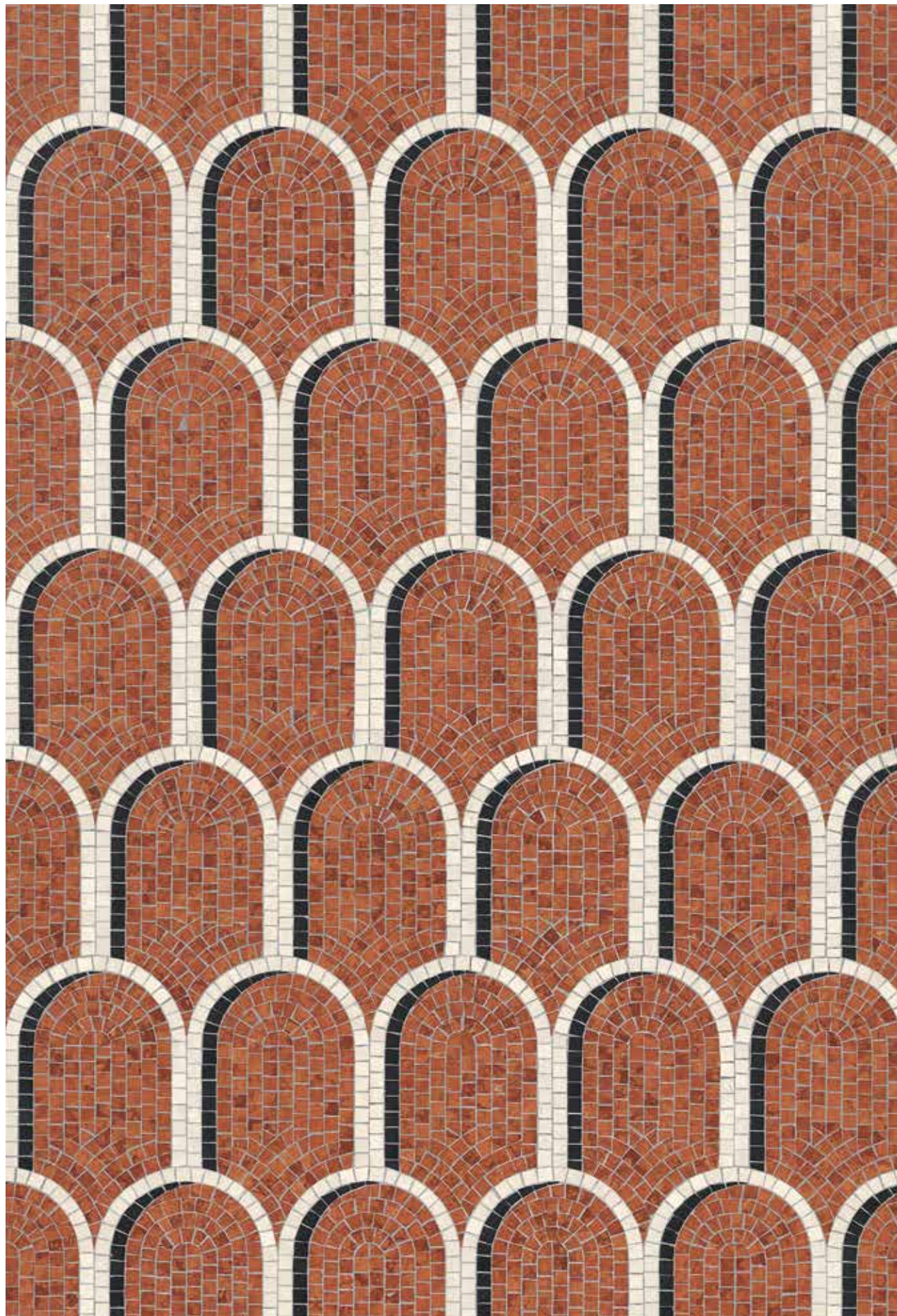
SOLFERINO VERDE



TRIENNALE ROSSO

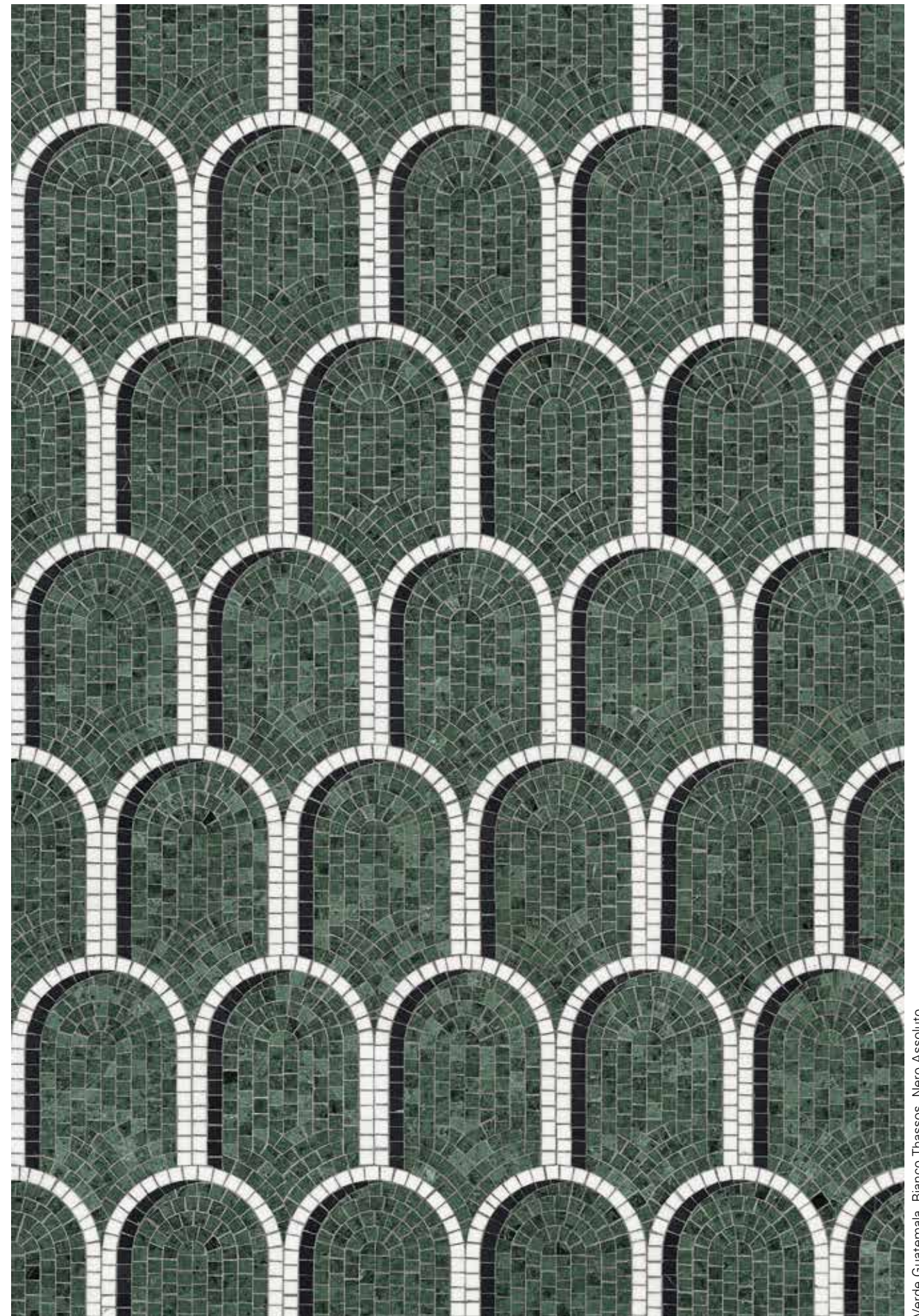
La collezione trae spunto dai pavimenti di palazzi, residenze, alberghi e uffici del Novecento milanese disegnati da Giovanni Muzio, Emilio Lancia, Piero Portaluppi e Gio Ponti.





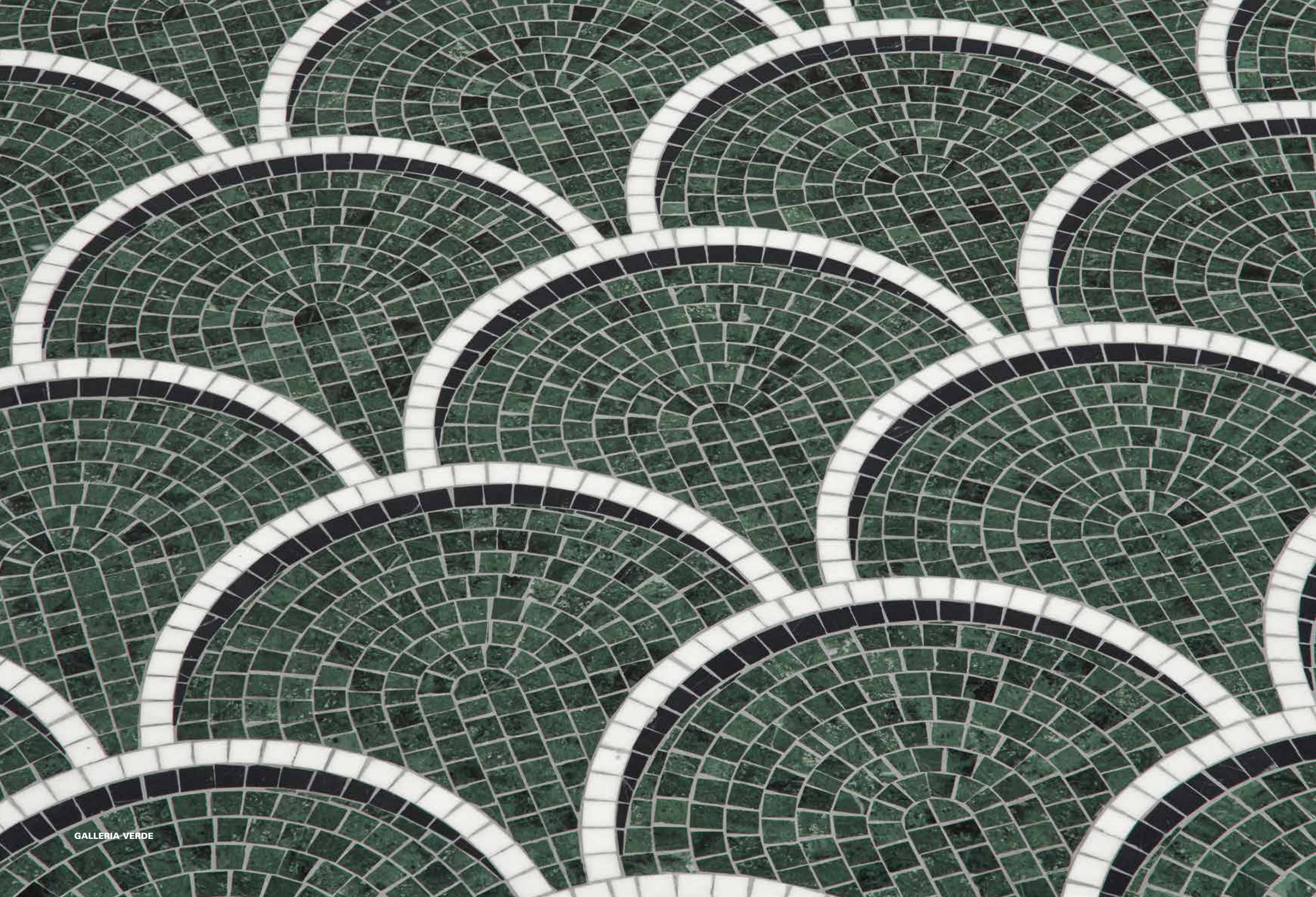
Rosso Verona, Crema Botticino, Nero Assoluto

TRIENNALE ROSSO

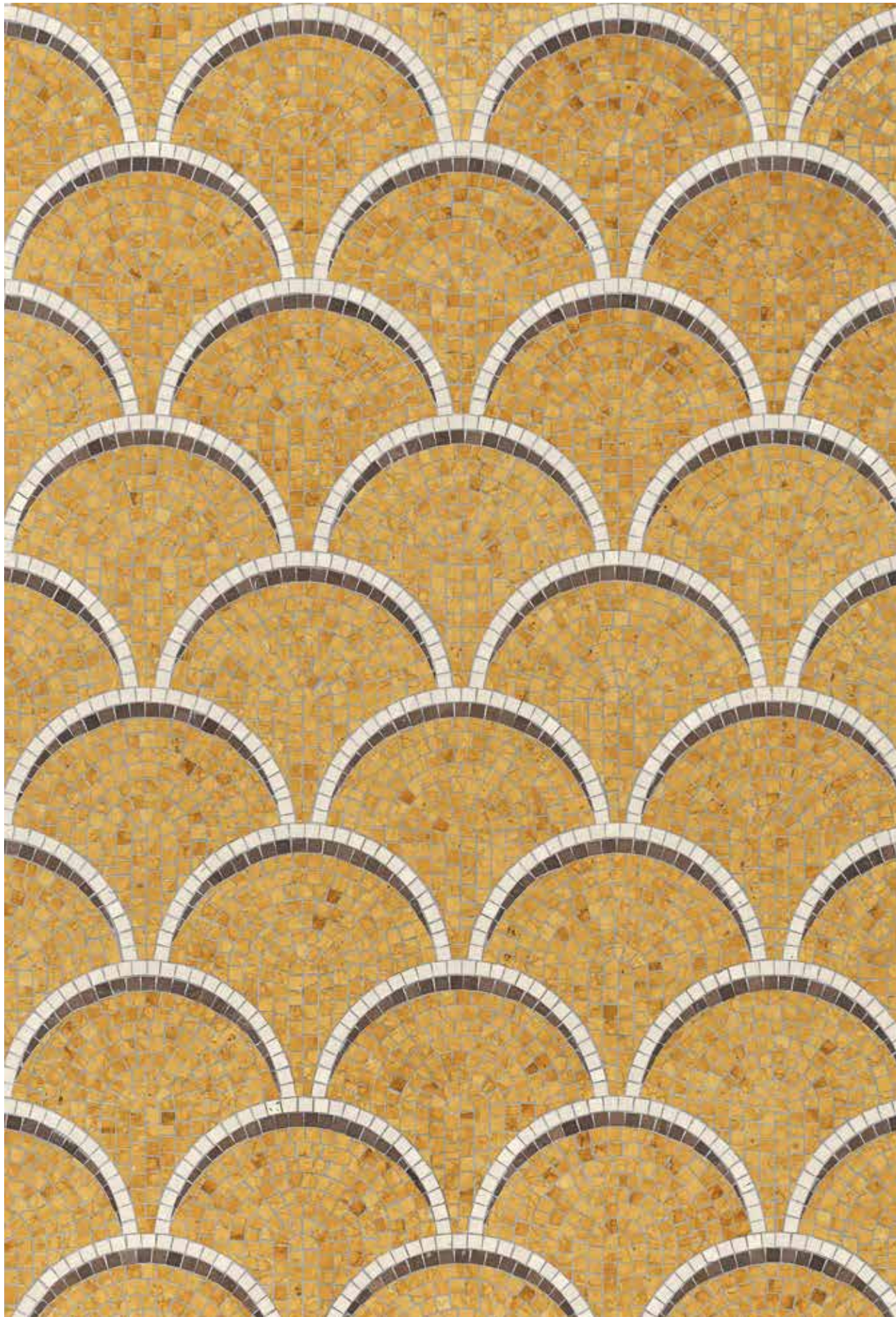


Verde Guatemala, Bianco Thassos, Nero Assoluto

TRIENNALE VERDE







Giallo Verona, Crema Botticino, Marrone Ebano

GALLERIA GIALLO



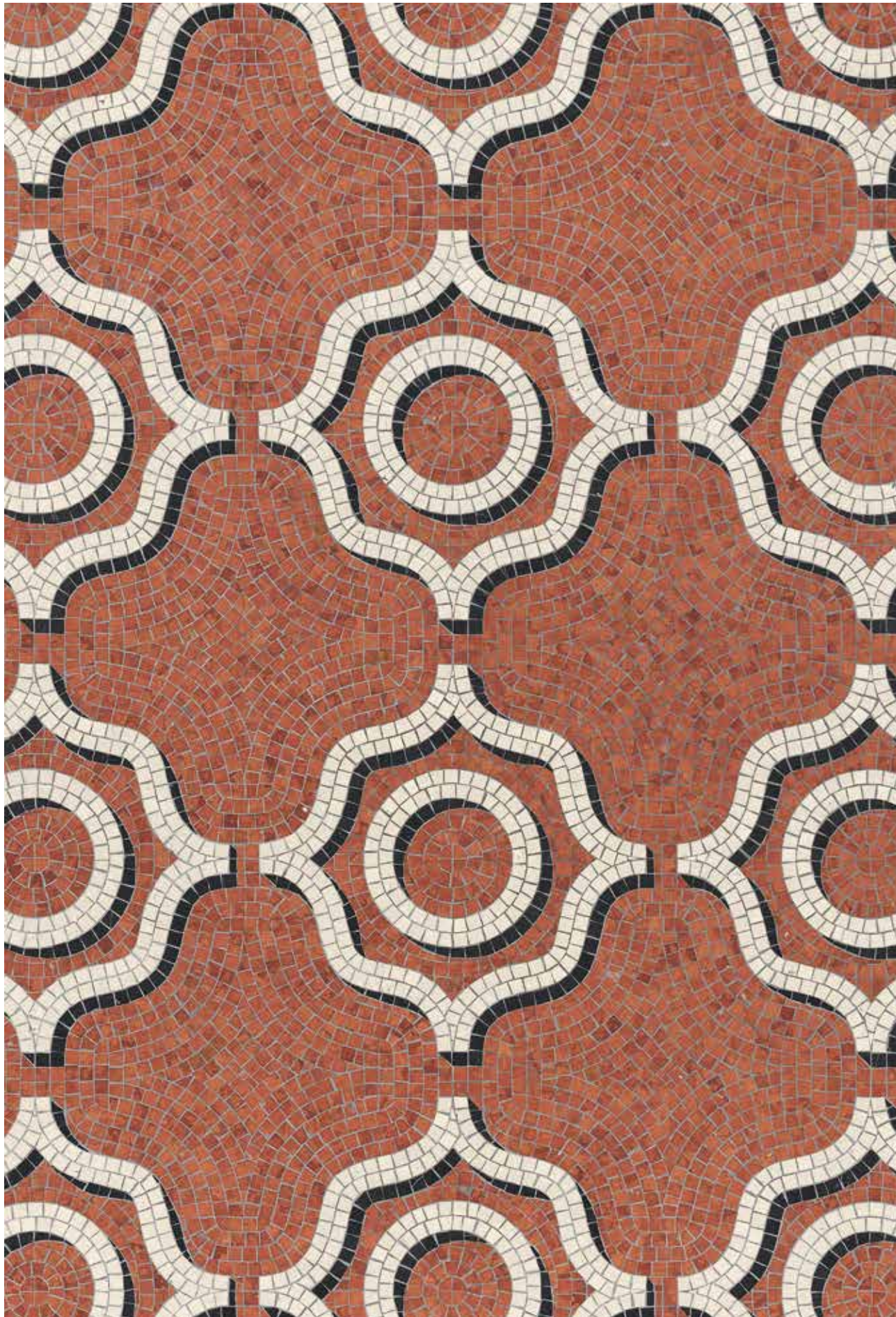
Verde Guatemala, Bianco Thassos, Nero Assoluto

GALLERIA VERDE



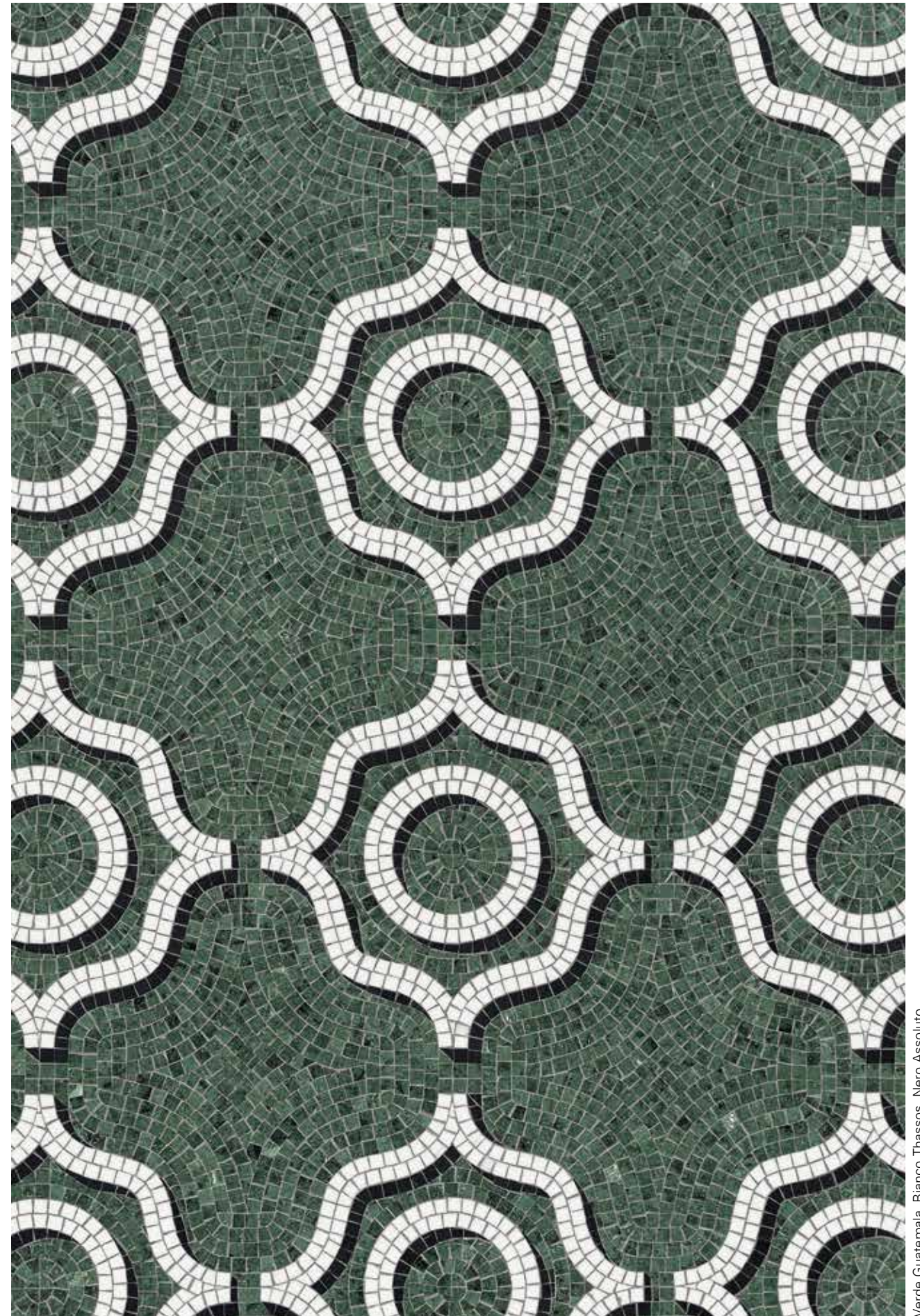


CORONARO VERDE



Rosso Verona, Crema Botticino, Nero Assoluto

CORONARO ROSSO

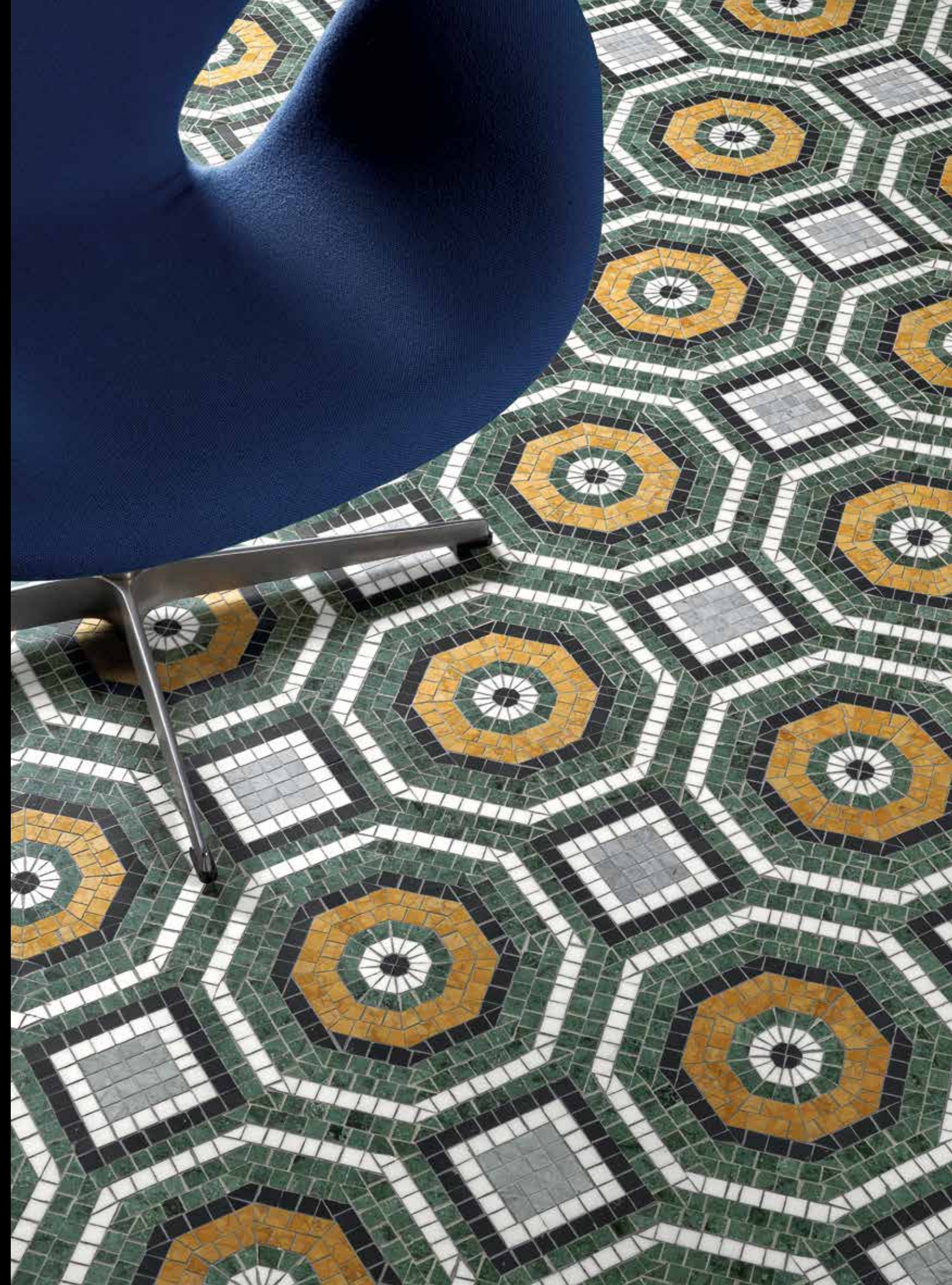


Verde Guatemala, Bianco Thassos, Nero Assoluto

CORONARO VERDE



The project is inspired by the floors in historic Milanese buildings from the early 1900s designed by Giovanni Muzio, Emilio Lancia, Piero Portaluppi and Gio Ponti.





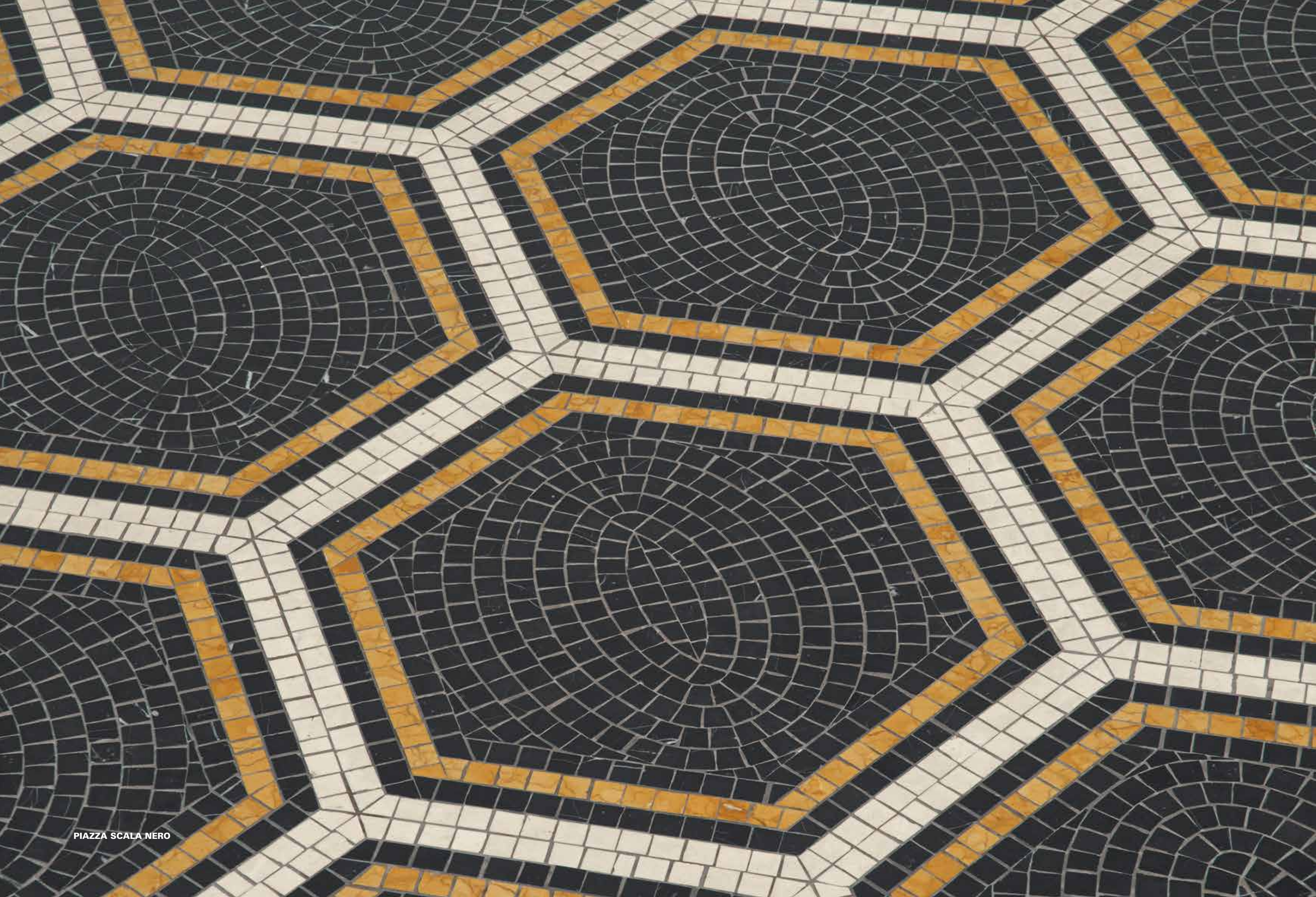
Rosso Verona, Crema Botticino, Nero Assoluto, Giallo Verona, Grigio Bardiglio

VERRI ROSSO



Verde Guatemala, Bianco Thassos, Nero Assoluto, Giallo Verona, Grigio Bardiglio

VERRI VERDE



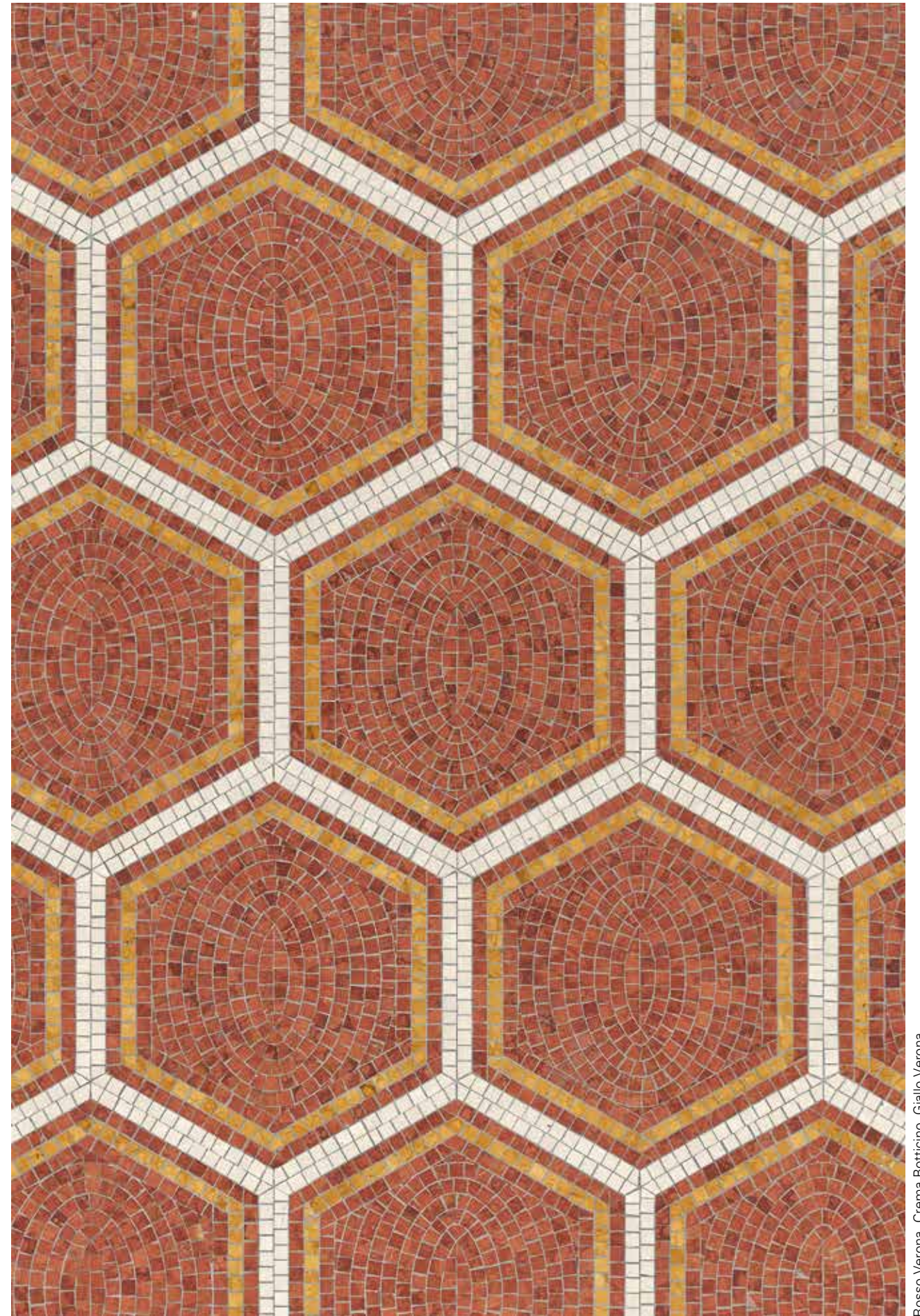


PIAZZA SCALA ROSSO



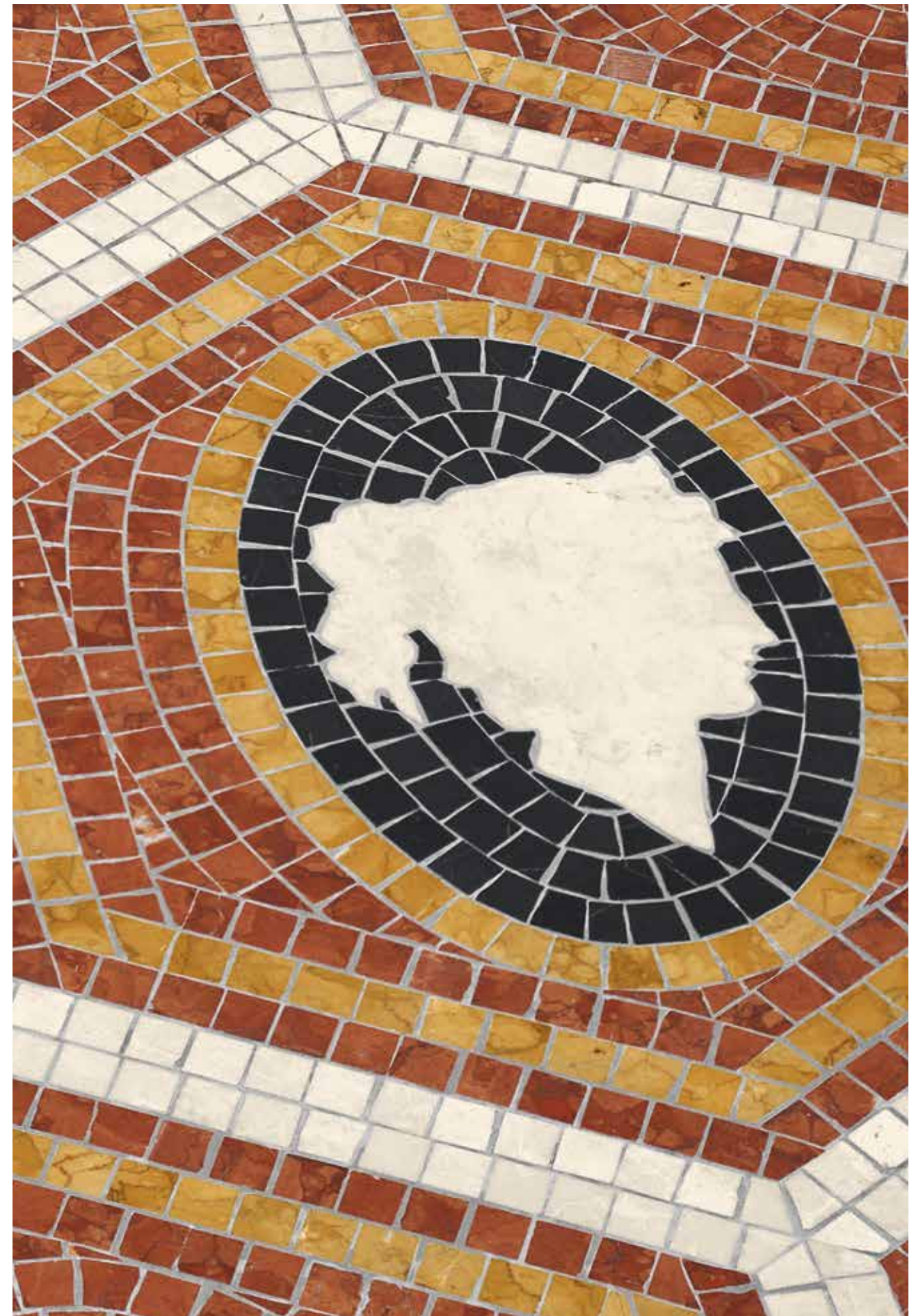
Nero Assoluto, Crema Botticino, Giallo Verona

PIAZZA SCALA NERO



Rosso Verona, Crema Botticino, Giallo Verona

PIAZZA SCALA ROSSO



CAMEO 2 ROSSO



PIAZZA SCALA NERO

CAMEO 1-2-3-4 NERO



PIAZZA SCALA NERO

CAMEO 1-2-3-4 NERO

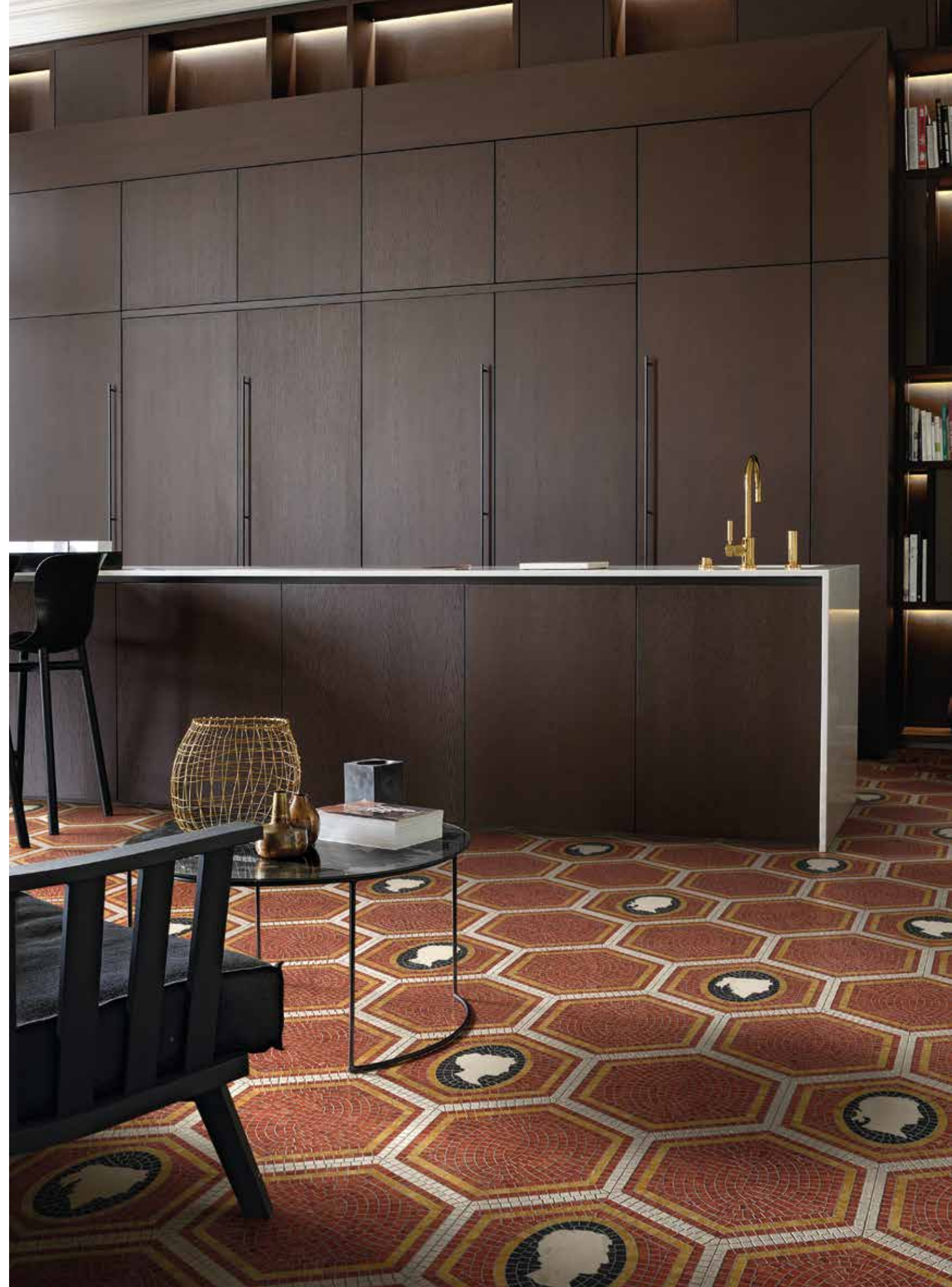


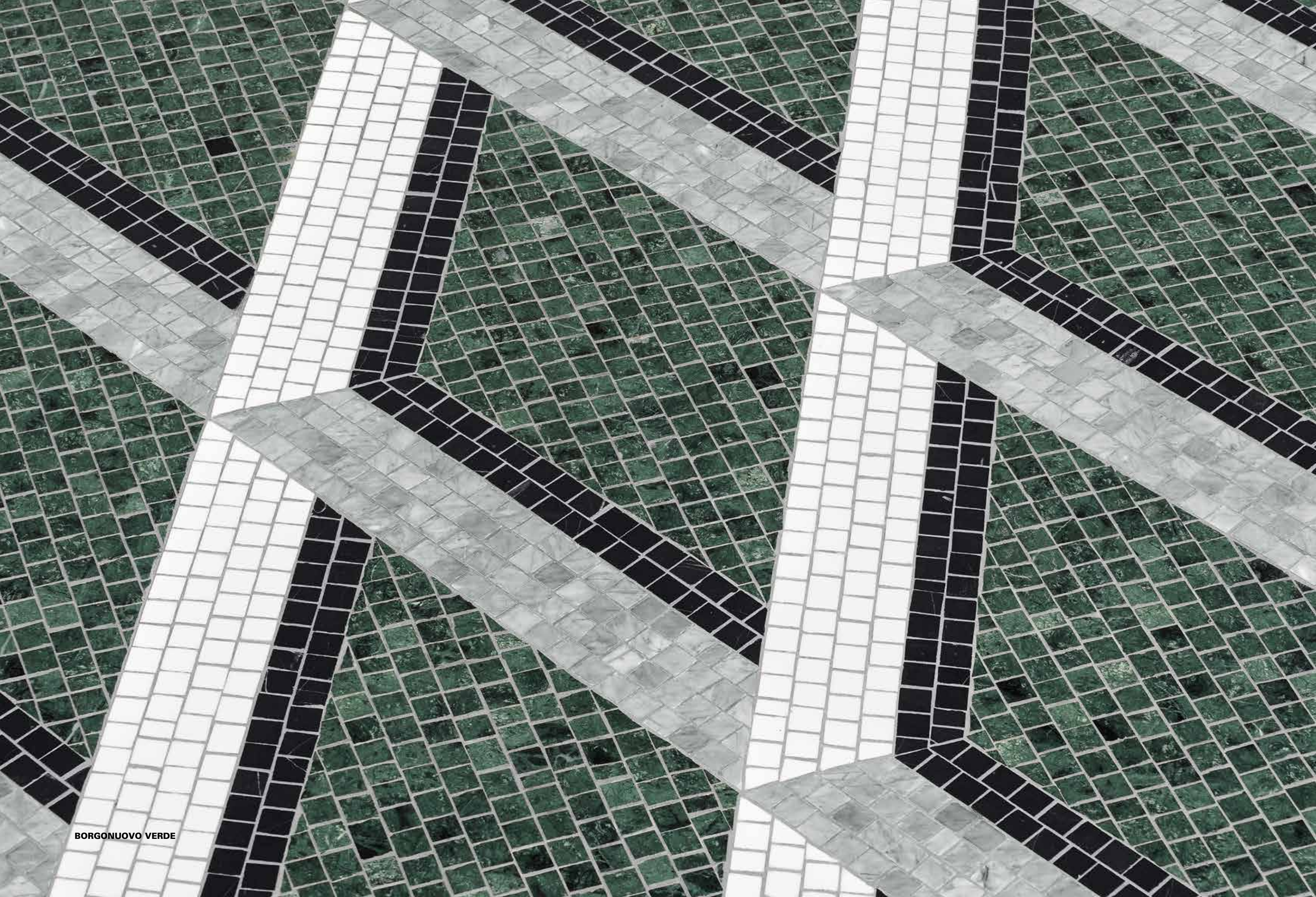
PIAZZA SCALA ROSSO

CAMEO 1-2-3-4 ROSSO

PIAZZA SCALA ROSSO

CAMEO 1-2-3-4 ROSSO





BORGONUOVO VERDE





Verde Guatemala, Bianco Thassos, Grigio Bardiglio, Nero Assoluto

BORGONUOVO VERDE



Crema Botticino, Rosso Verona, Giallo Verona, Grigio Bardiglio

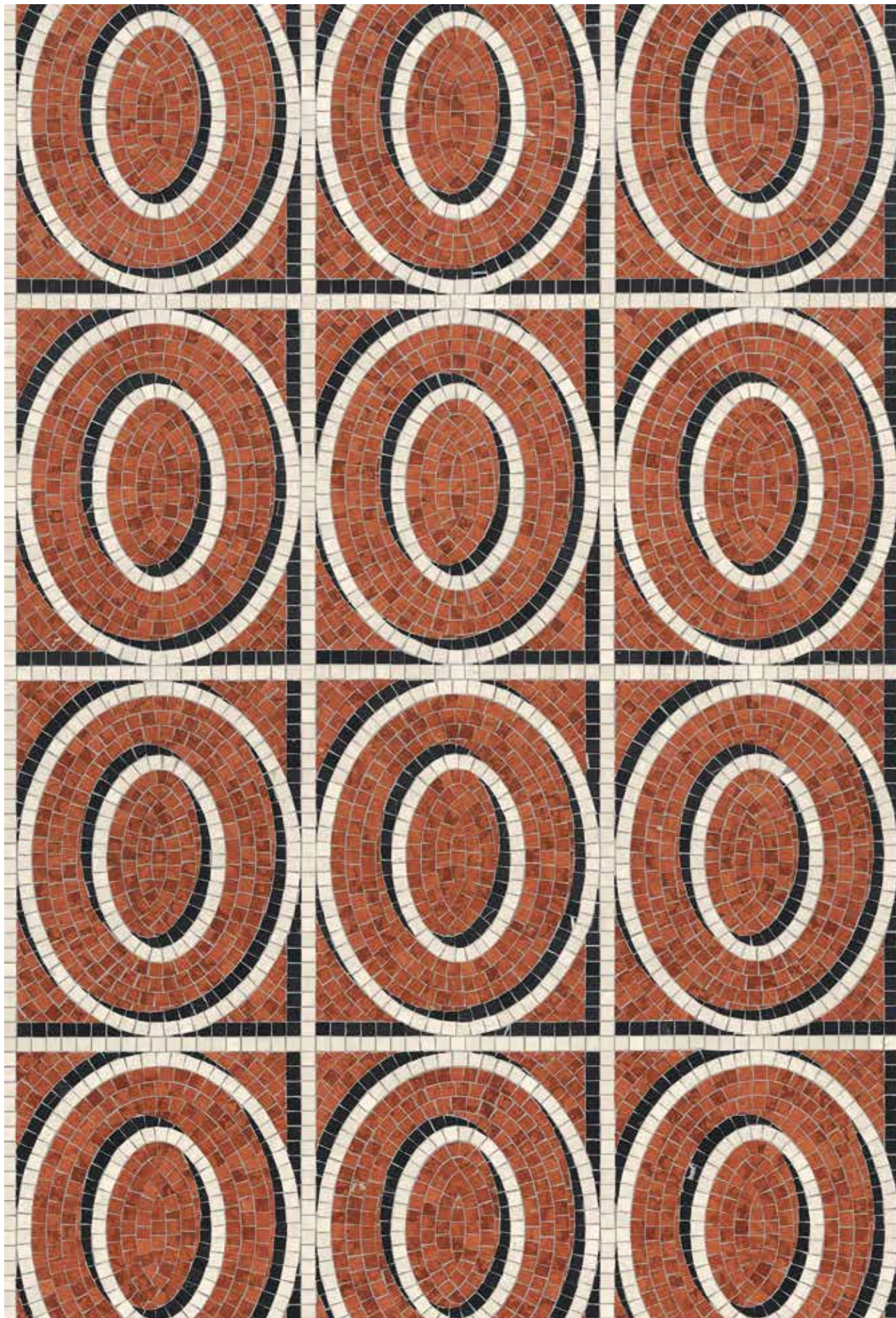
BORGONUOVO CREMA



MONTENAPOLEONE ROSSO

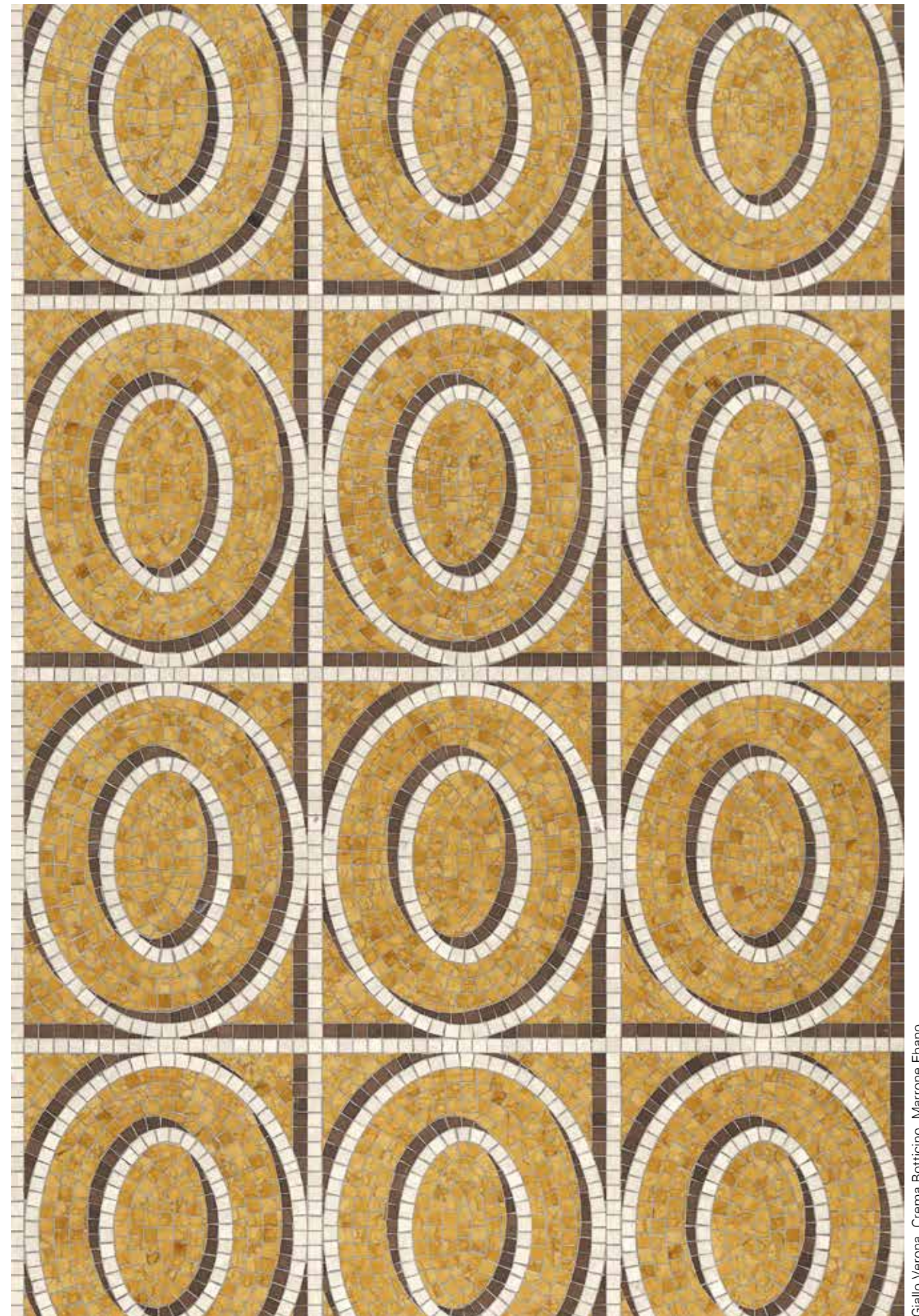


MONTENAPOLEONE GIALLO



Rosso Verona, Crema Botticino, Nero Assoluto

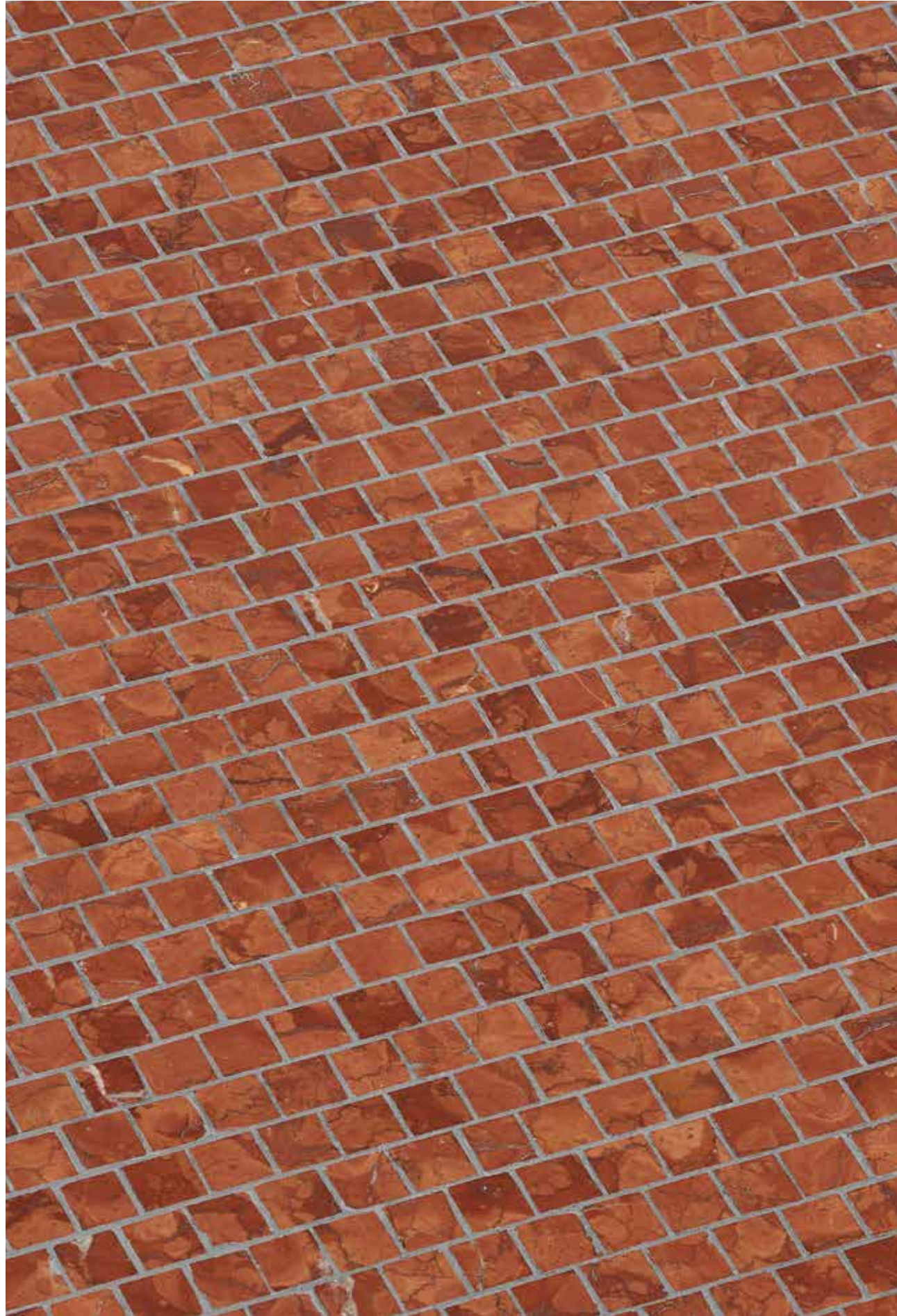
MONTENAPOLEONE ROSSO



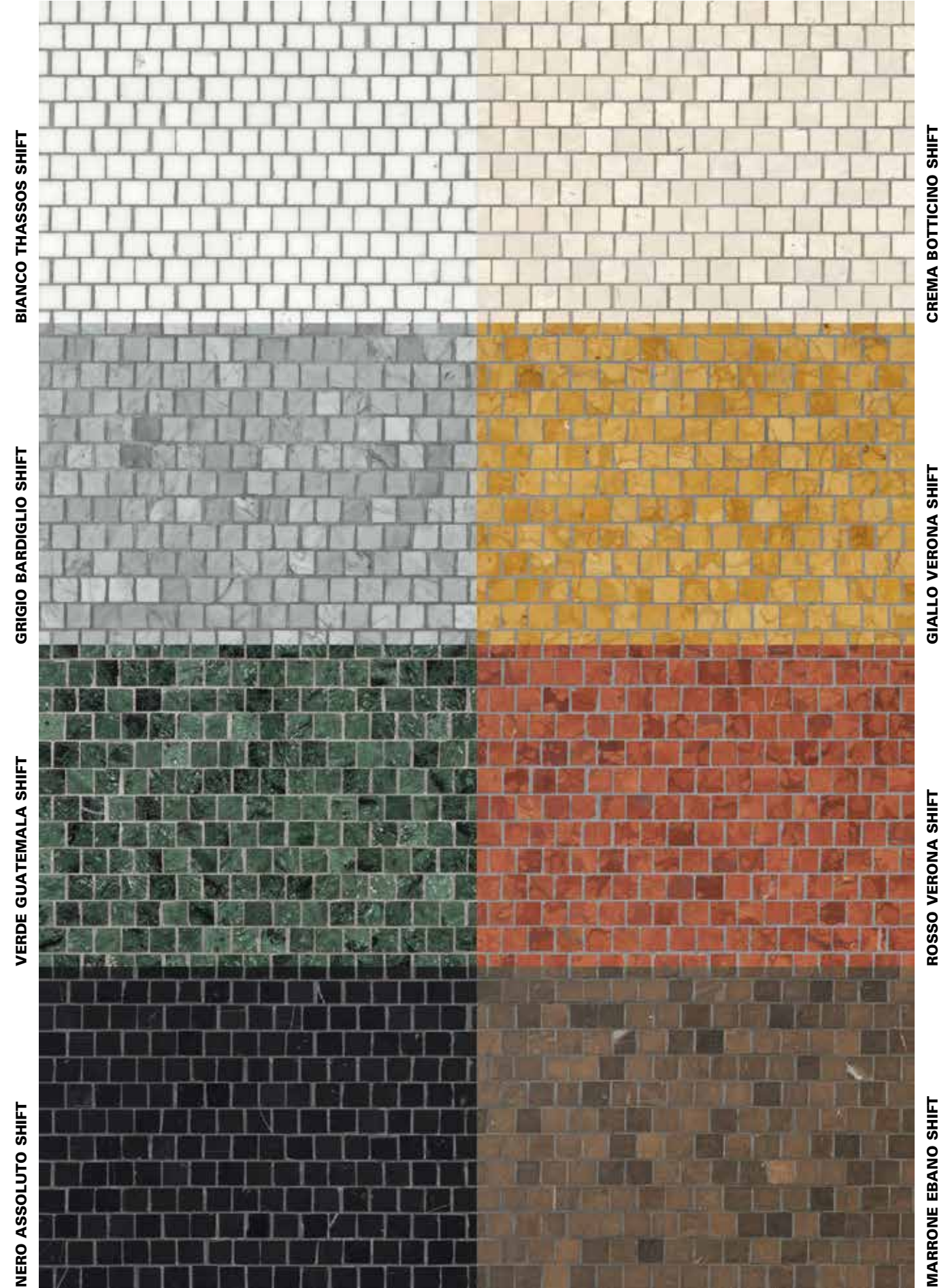
Giallo Verona, Crema Botticino, Marrone Ebano

MONTENAPOLEONE GIALLO

I MARMI
THE MARBLE



ROSSO VERONA SHIFT



NERO ASSOLUTO



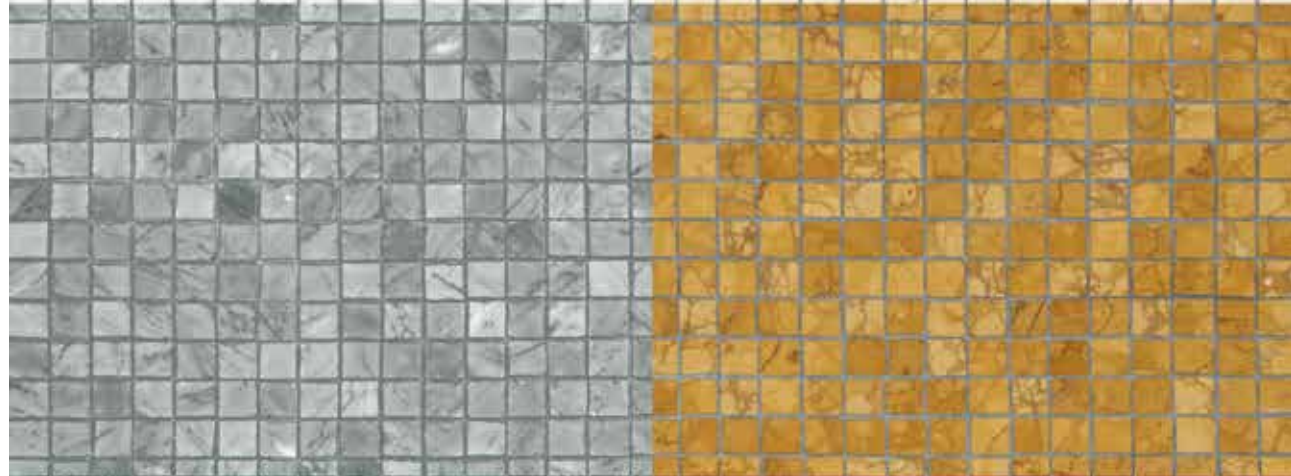
MARRONE EBANO

VERDE GUATEMALA



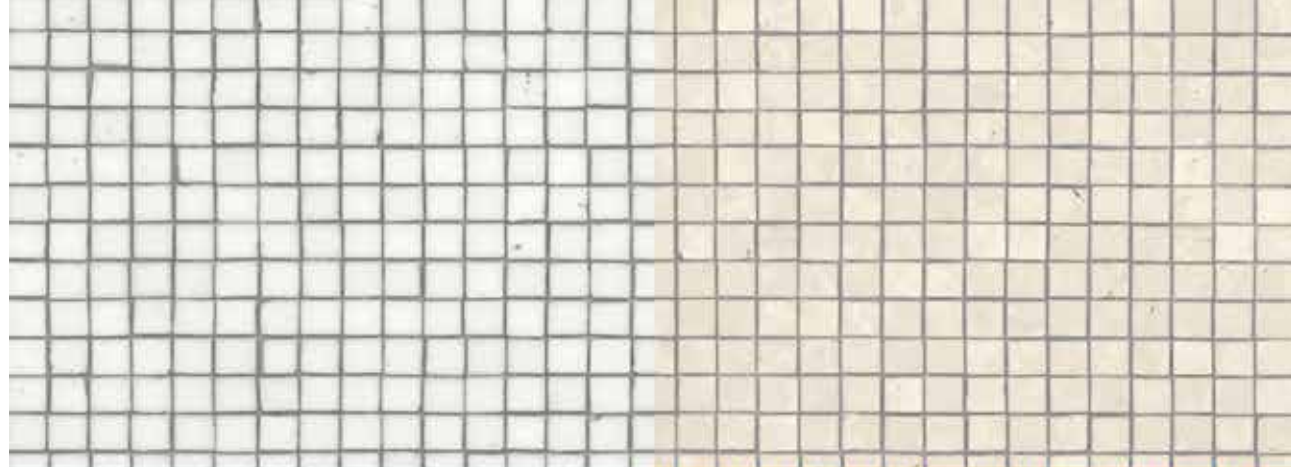
ROSSO VERONA

GRIGIO BARDIGLIO



GIALLO VERONA

BIANCO THASSOS



CREMA BOTTICINO



I decori della collezione Marmosaico sono realizzati con tessere di mosaico di marmo di 1,5 x 1,5 cm, levigate con finitura opaca, tagliate su misura e disposte a mano per seguire l'andamento del disegno.

Il peso del marmo, con spessore di circa 1 cm, è di 21-23 kg/mq.

The decorative patterns in the Marmosaico collection are made with honed marble mosaic tesserae, measuring 1,5 x 1,5 cm, with matt finish, cut to size and laid by hand to follow the design motif.

The weight of the approx. 1 cm thick marble is 21-23 kg/sqm.

Les décorations de la collection Marmosaico sont réalisées avec des tesselles de mosaïque en marbre lisses au fini mat, de dimensions 1,5 x 1,5 cm, découpées sur mesure et assemblées à la main en suivant le dessin.

Le poids du marbre, qui mesure environ 1 cm d'épaisseur, est de 21-23 kg/m².

Die Dekore der Kollektion Marmosaico werden mit geschliffenen Marmor-Mosaiksteinen im Format 1,5 x 1,5 cm und in matter Oberfläche ausgeführt. Sie sind nach Maß zugeschnitten und gemäss Zeichnungsvorlage von Hand angeordnet.

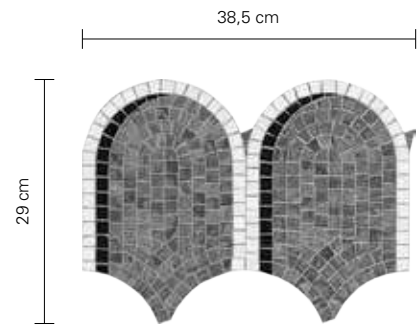
Das Gewicht von Marmor liegt bei einer Stärke von ca. 1 cm bei 21-23 kg/m².

Las decoraciones de la colección Marmosaico están realizadas con teselas de mosaico de mármol de 1,5 x 1,5 cm, pulidas con acabado mate, cortadas a medida y dispuestas a mano para seguir el desarrollo del diseño.

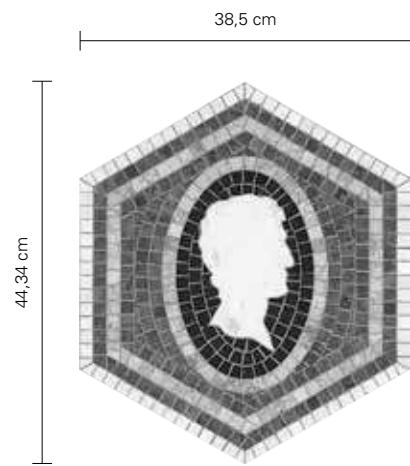
El peso del mármol, con un espesor de aproximadamente 1 cm, es de 21-23 kg/m².

DIMENSIONI MODULI

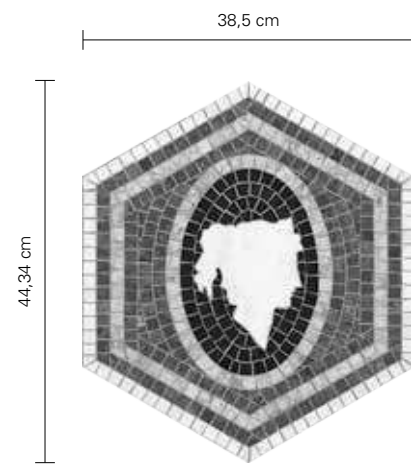
Module Size
Dimensions Modules
Modulgröße
Dimensiones Módulos



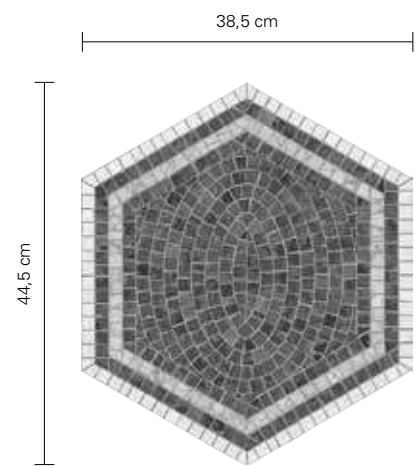
TRIENNALE



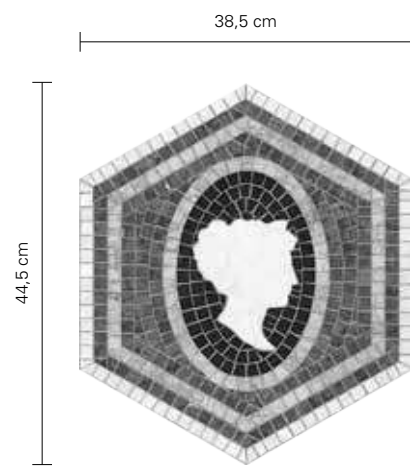
CAMEO 1



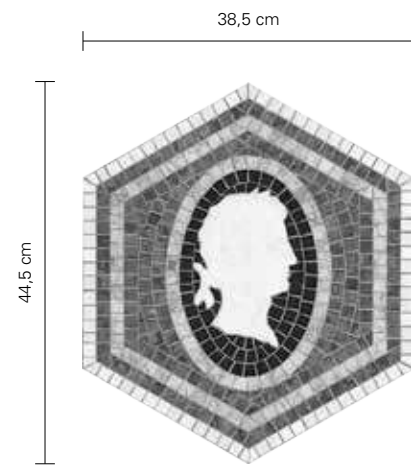
CAMEO 2



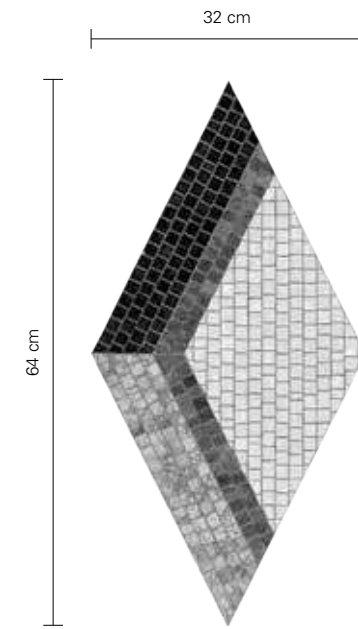
PIAZZA SCALA



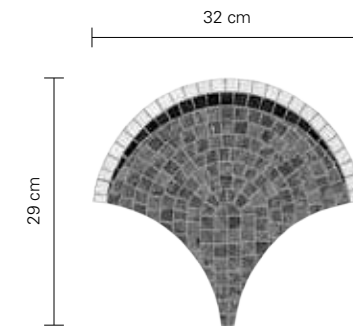
CAMEO 3



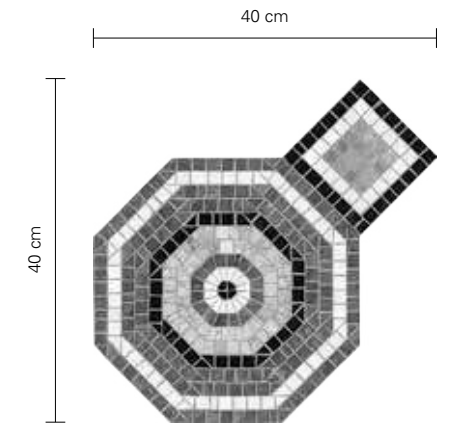
CAMEO 4



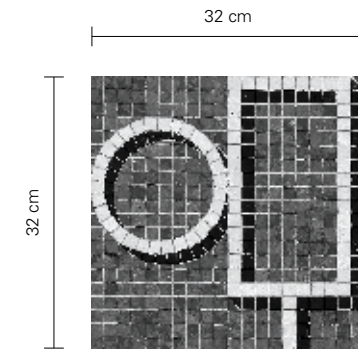
BORGONUOVO



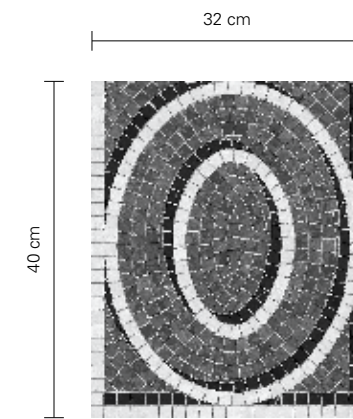
GALLERIA



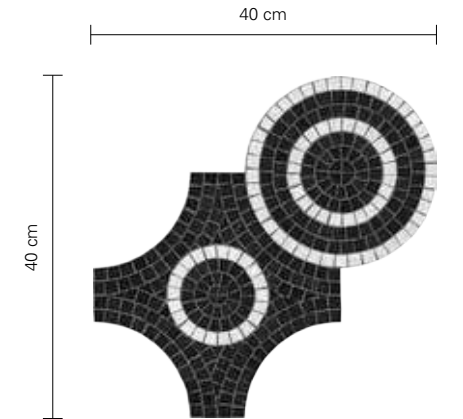
VERRI



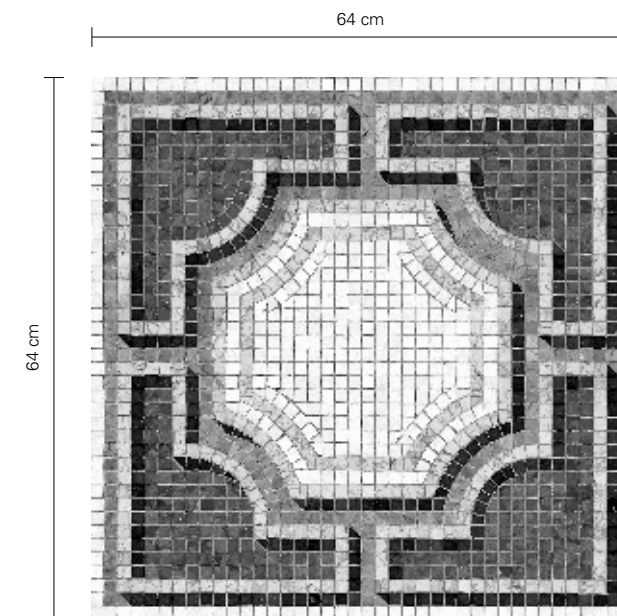
BRERA



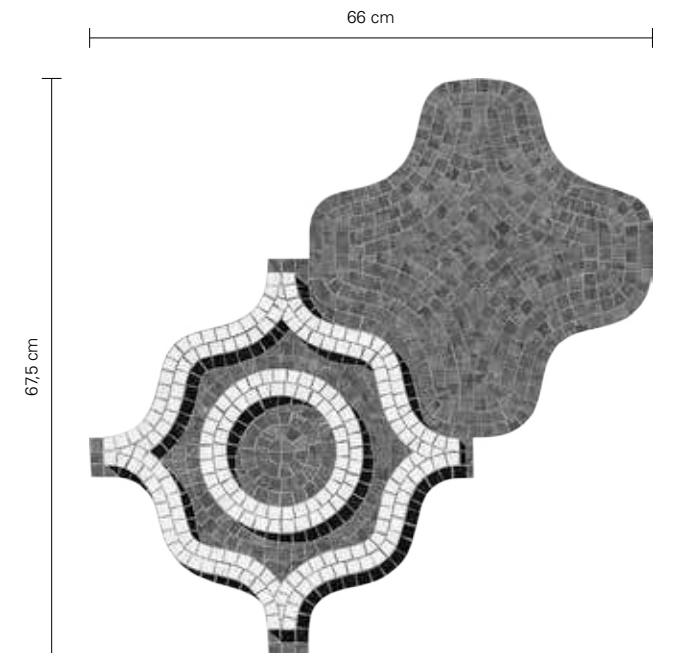
MONTENAPOLEONE



BELGIOIOSO



SOLFERINO



CORONARO

AVVERTENZE

Instructions
Attention
Wichtige Hinweise
Advertencias

I marmi in genere sono per loro natura soggetti a variazione di colore, struttura e venature. Le naturali differenze tra campioni e fornitura o tra forniture diverse sono pertanto da ritenersi caratteristiche del materiale.
La collezione Marmosaico non è adatta all'utilizzo a pavimento in esterno. Per ulteriori informazioni consultare l'area tecnica del sito www.bisazza.com.

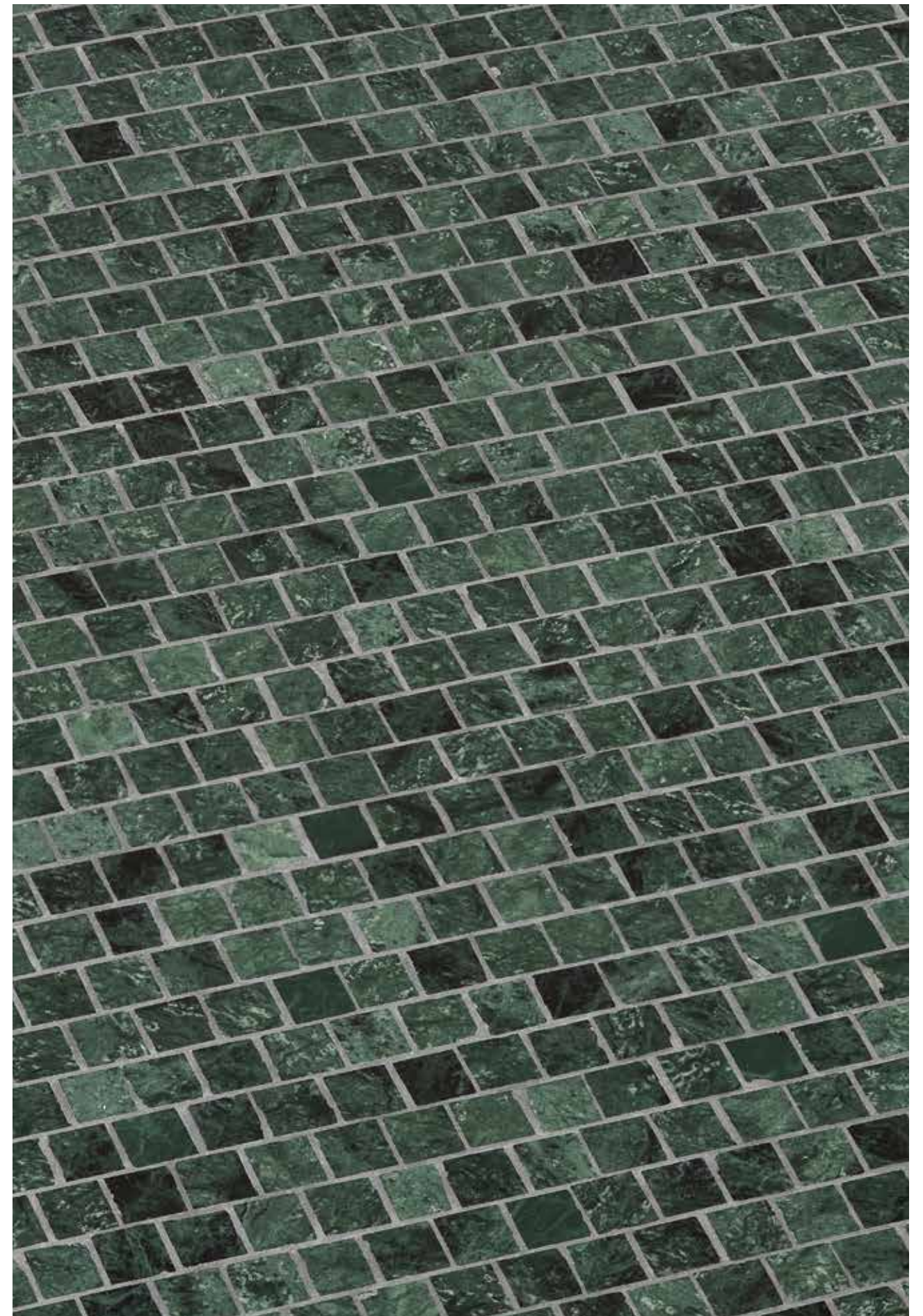
Marble is, by nature, subject to variations in color, structure, and veining. The natural differences between samples and supply or between one supply and another are, therefore, regarded as characteristics of the material.
The Marmosaico collection is not suitable for outdoor flooring. For further information, please see the technical area of the site www.bisazza.com.

Les marbres en général sont, par nature, sujets à des variations de couleur, de structure et de veines. Par conséquent, les différences naturelles entre les échantillons et la fourniture ou entre les différentes fournitures doivent être considérées comme des caractéristiques du matériau. La collection Marmosaico n'est pas adaptée à un revêtement de sol en extérieur. Pour plus d'information consulter la section technique du site www.bisazza.com.

Aufgrund den Natureigenschaften des Marmors können die Farbe, die Struktur und die Marmorierung variieren. Die natürlichen Unterschiede zwischen den Materialmustern und der Lieferung oder zwischen unterschiedlichen Lieferungen zeichnen dadurch das Produkt aus.
Die Marmosaico Kollektion ist nicht für Fußboden im Aussenbereich geeignet. Bei weiteren Fragen besuchen Sie bitte die technische Seite in unserer Website www.bisazza.com.

Los mármoles en general, debido su origen, están sujetos a variaciones de color, estructura y veteado. Por lo tanto, las diferencias naturales entre las muestras y el suministro o entre diferentes suministros son parte de las características propias del material.
La colección Marmosaico no es idónea para suelos exteriores. Para más información, consulte el área técnica del sitio web www.bisazza.com.

La riproduzione fotografica dei colori, anche se molto vicina alla realtà, deve considerarsi a carattere puramente indicativo.
The photo reproduction of the colors, although very close to reality, should be considered purely indicative.
La reproduction photographique des couleurs, même si très proche de la réalité, n'est que purement indicative.
Obwohl die Farben der Fotos realitätsnah sind, können sie zum Teil leicht vom Original abweichen.
La reproducción fotográfica de los colores, aunque se acerque mucho a lo que son en la realidad, tiene que ser considerada solamente a título indicativo.



VERDE GUATEMALA SHIFT

Foto Helenio Barbetta / Courtesy of Studio Dell'Uva

Federico Cedrone

Lorenzo Ceretta

Greg Cox / Bureaux / Living Inside

Montse Garriga Grau

Matteo Imbriani

Gaelle Le Boulicaut

Davide Lovatti / Living Inside

Richard Powers

Erick Saillet

Monica Spezia / Living Inside

Progetto grafico Paolo Rinaldi

Bisazza

36075 Montecchio Maggiore
Vicenza - Italia
Tel. +39 0444 707511
www.bisazza.com



DO507_00 BE V00